

APPENDIX A: SURVIVAL ANALYSIS WHEN DEVELOPERS WHO DO NOT COMMIT FOR OVER 30 DAYS ARE MARKED LEAVERS

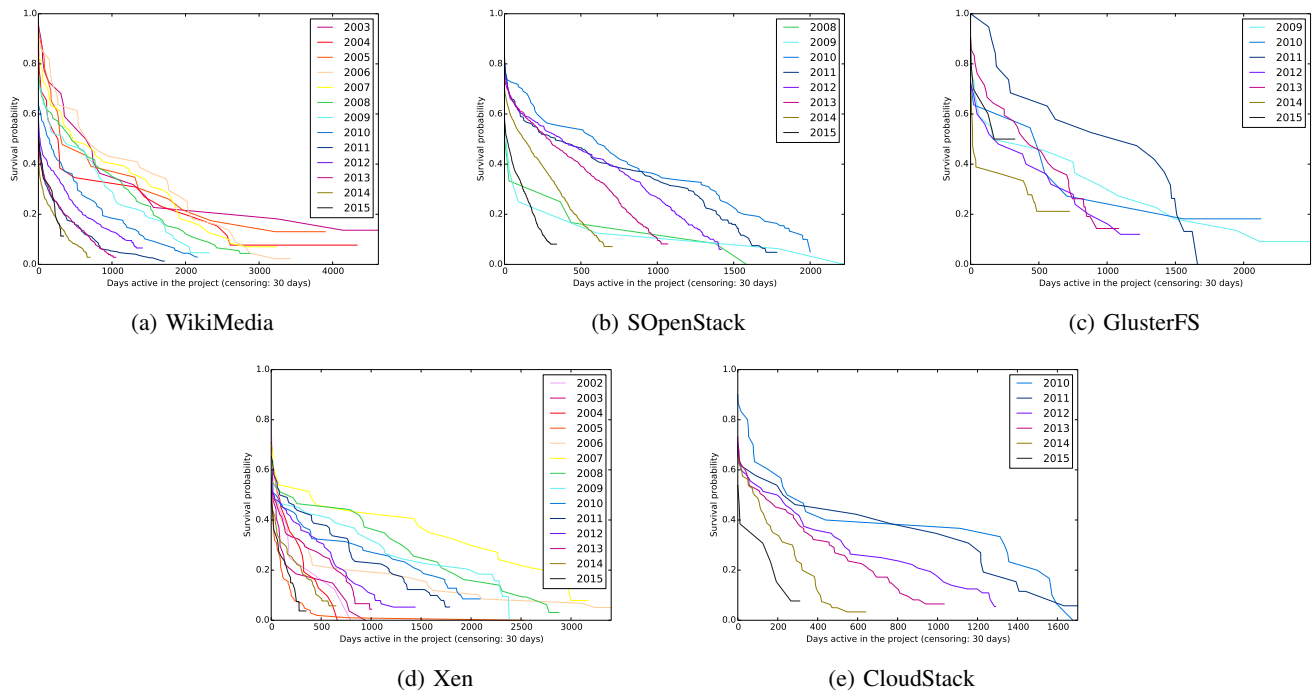


Fig. 5: Survival analysis by first commit year

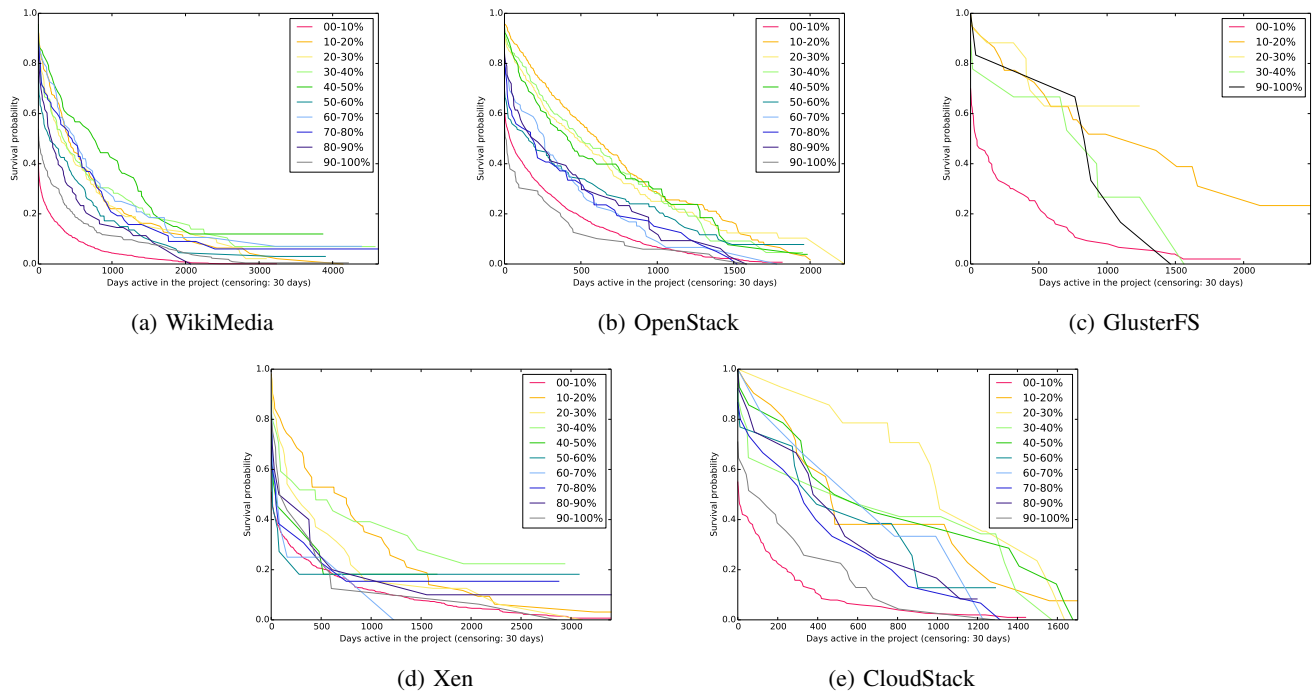


Fig. 6: Survival analysis by the rate of maintaining own files

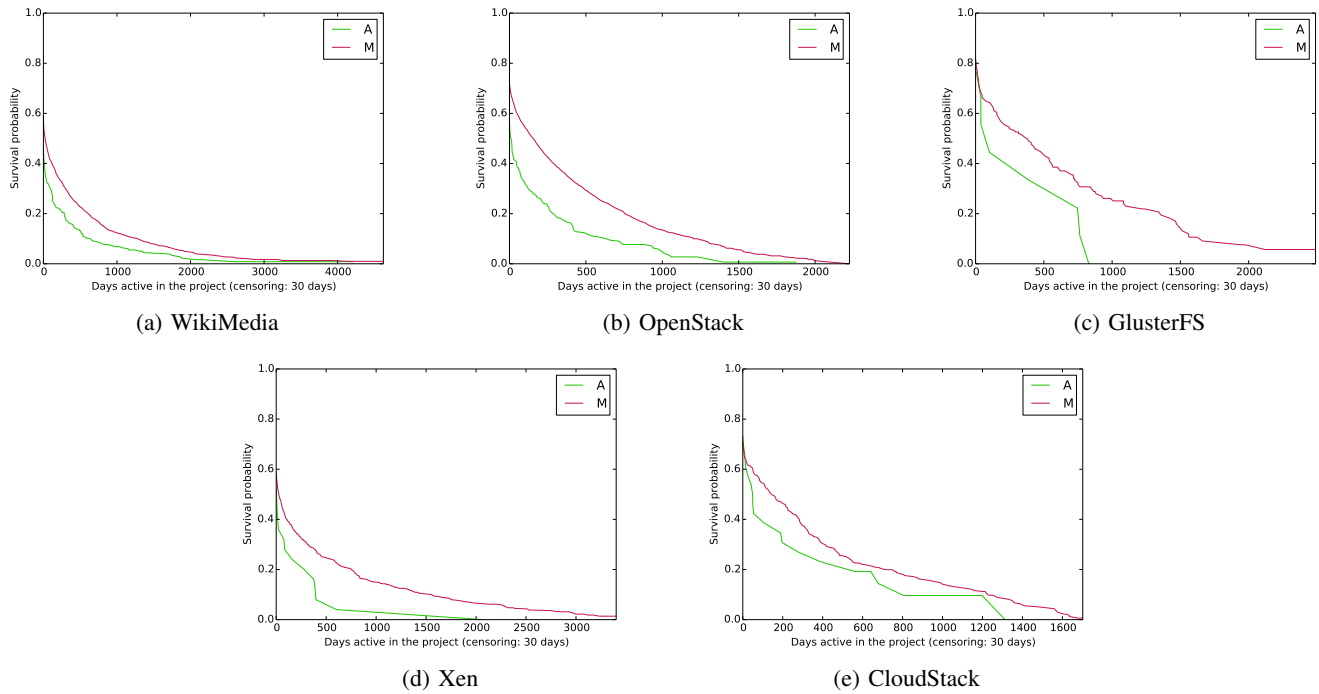


Fig. 7: Survival analysis by the main action type

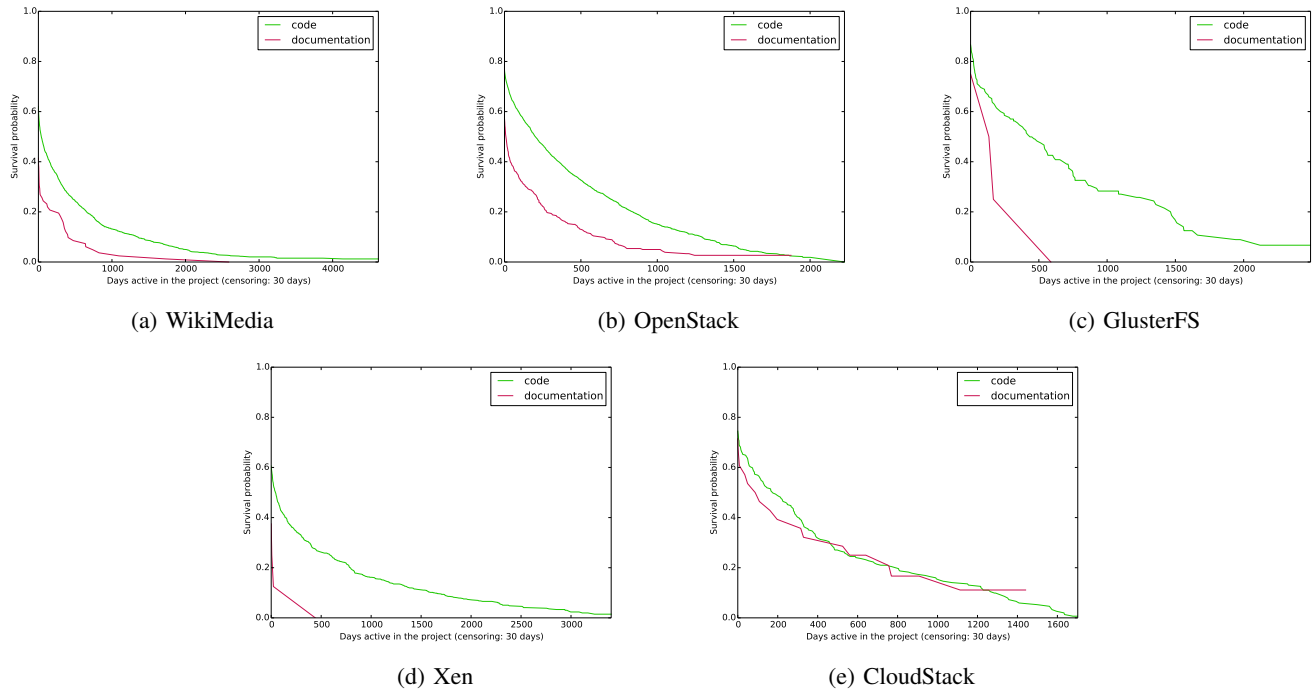


Fig. 8: Survival analysis by the main job

APPENDIX B: SURVIVAL ANALYSIS WHEN DEVELOPERS WHO DO NOT COMMIT FOR OVER 90 DAYS ARE MARKED LEAVERS

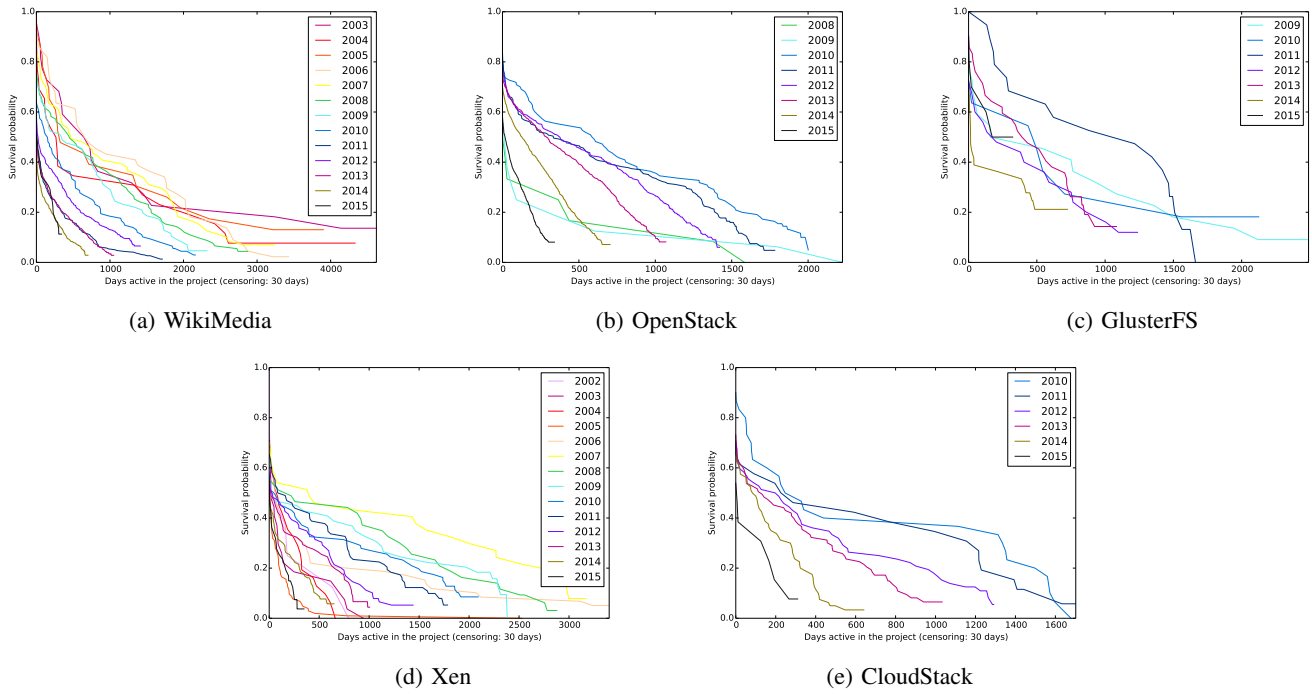


Fig. 9: Survival analysis by first commit year

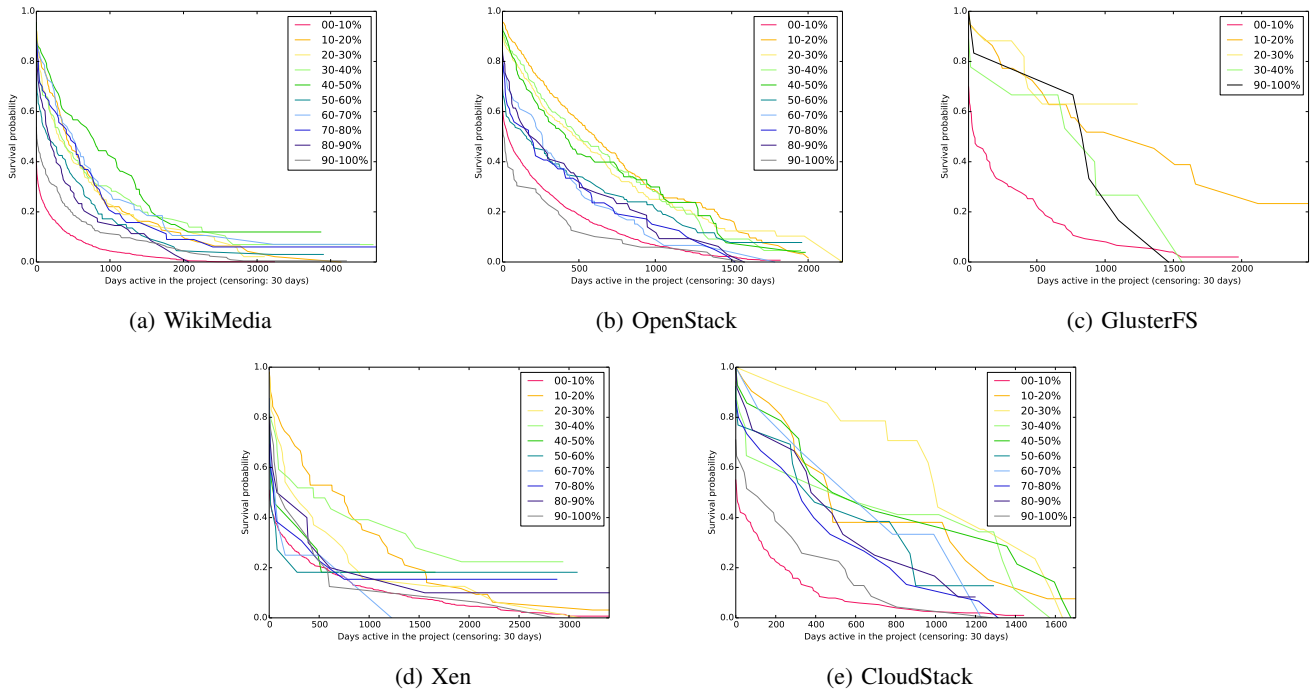


Fig. 10: Survival analysis by the rate of maintaining own files

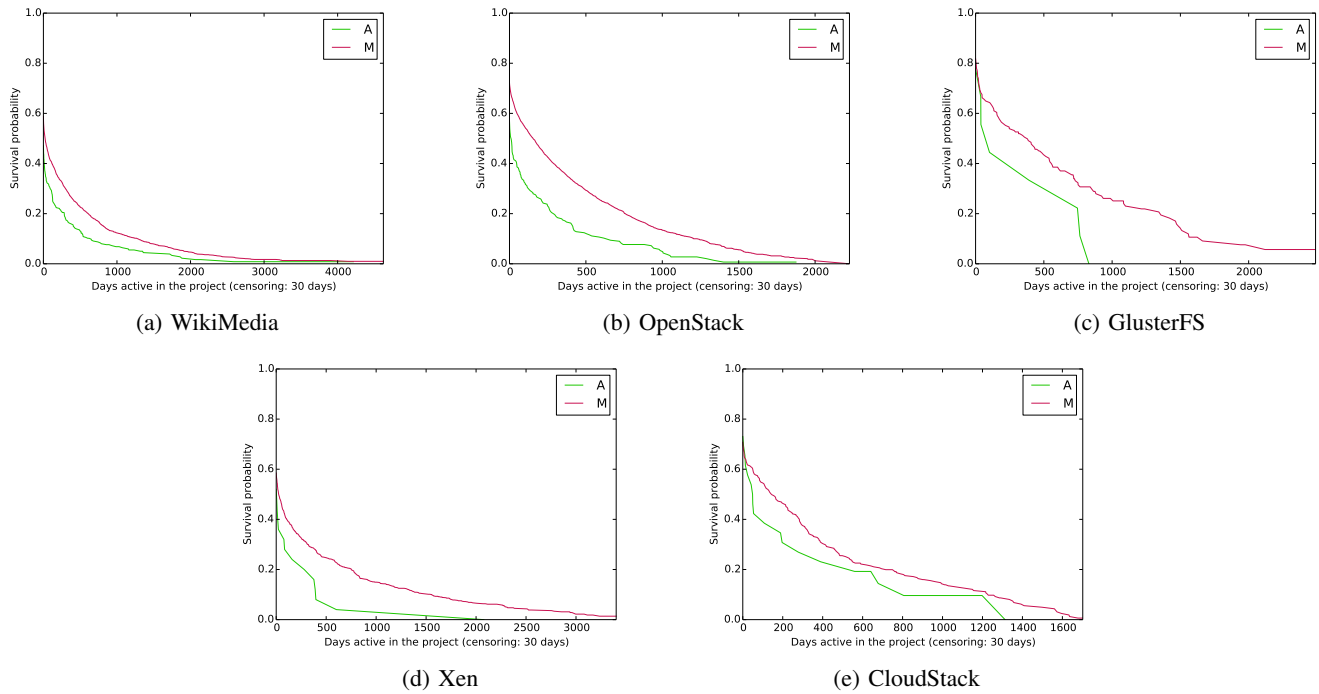


Fig. 11: Survival analysis by the main action type

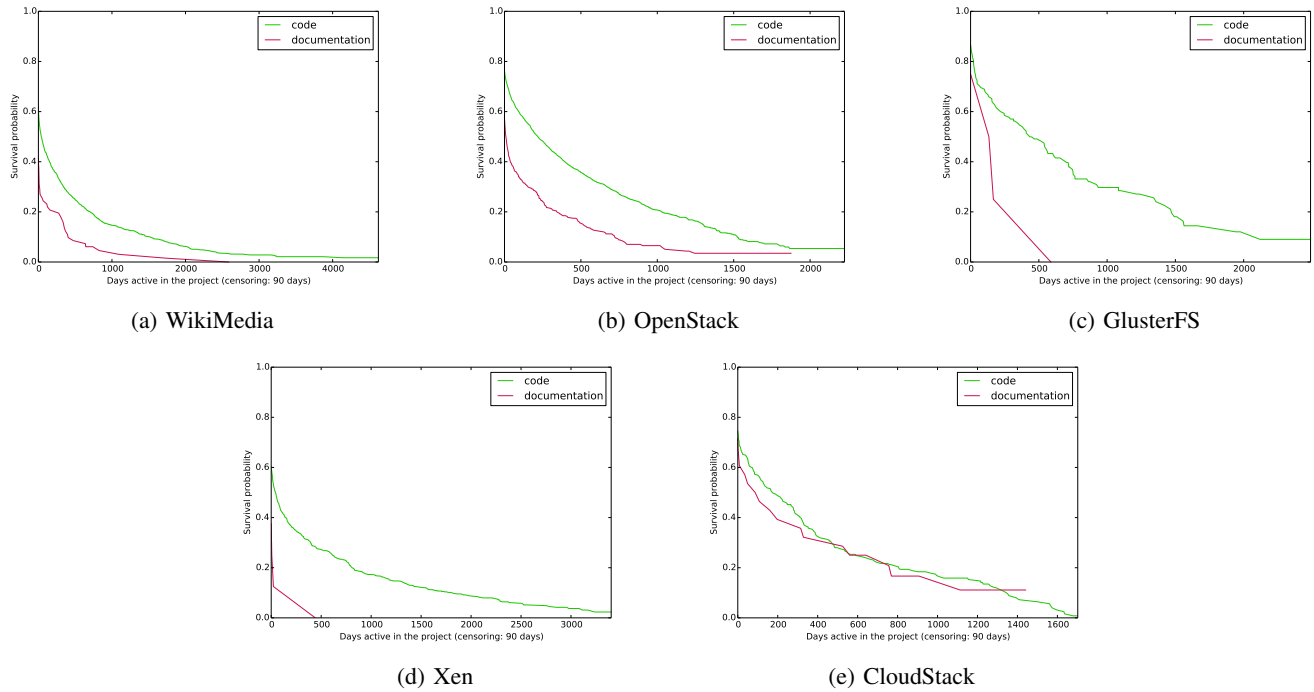


Fig. 12: Survival analysis by the main job

APPENDIX C: SURVIVAL ANALYSIS AFTER THOSE WHOSE MAIN ACTION IS “A” ARE UPSAMPLED

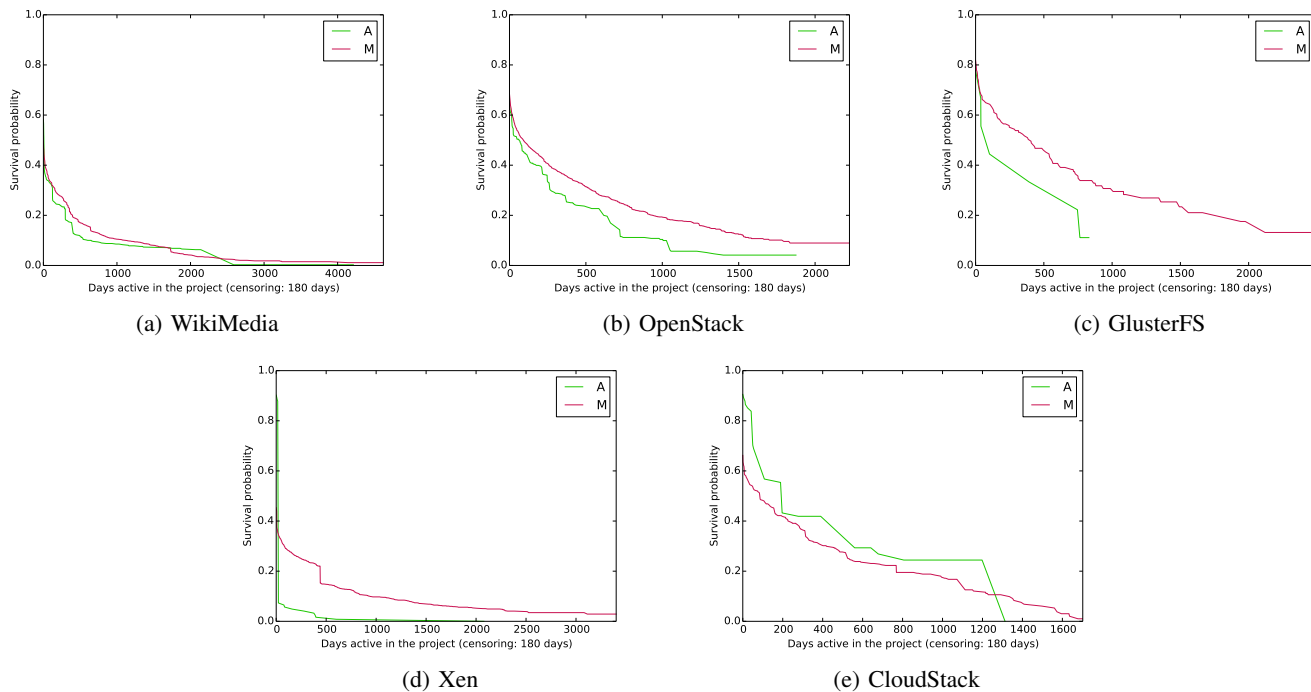


Fig. 13: Survival analysis by the main action type

APPENDIX D: SURVIVAL ANALYSIS AFTER THOSE WHOSE MAIN JOB IS “DOCUMENTATION” ARE UPSAMPLED

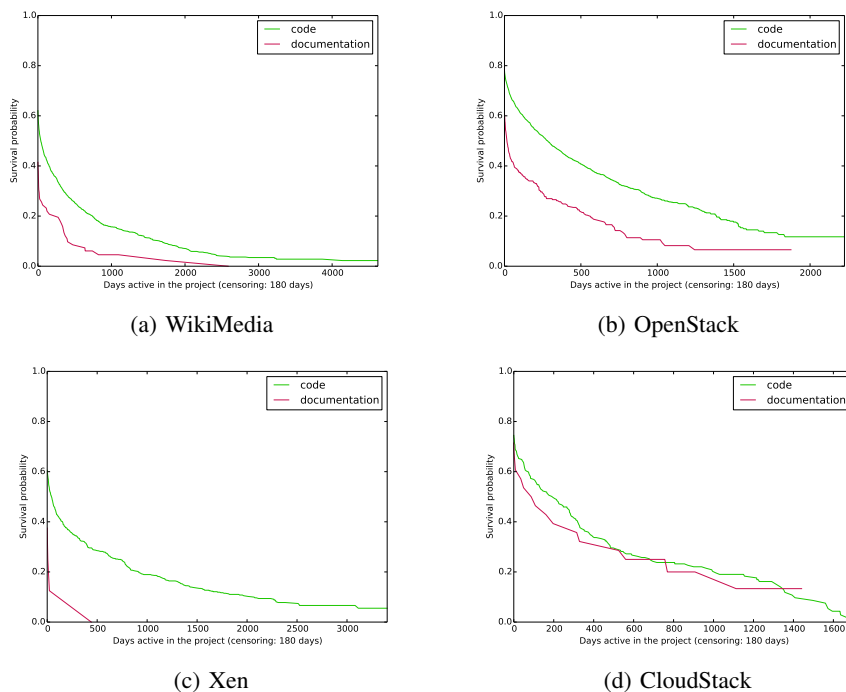


Fig. 14: Survival analysis by the main job